

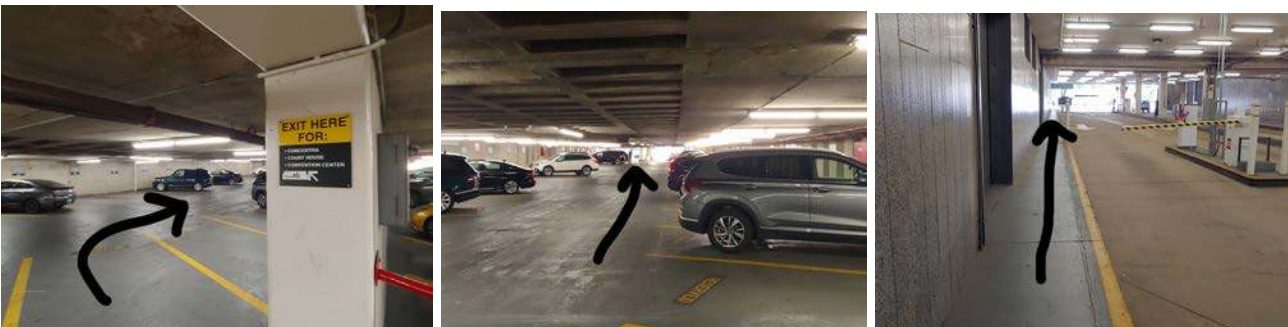
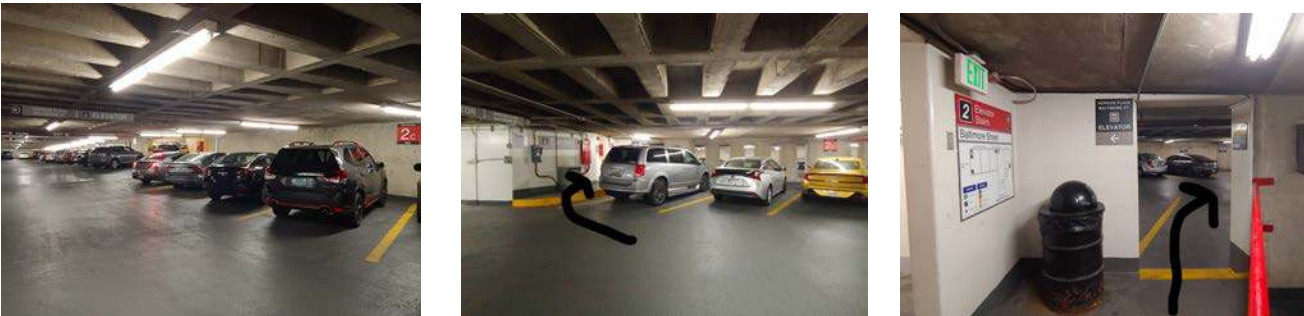
## Parking Instructions Grand Therapeutic Services

The parking garage is located on 110 W. Lombard Street, at the stoplight intersection with Hanover Street. Make a right into the garage at the stoplight for Hanover Street. Patients are encouraged to park in sections 2C, 3D, and 3E.

Turn Right into the Lombard Street Garage at the stop light once you drive past the underpass:



After taking a ticket, go straight, then make a left at the end. This will bring you to parking area 2C. If you park in 2C, to get to the clinic, walk back in the direction you entered in your car, toward the parking entrance. Walk through the cut-through, then turn right toward the way you entered the garage in your car.

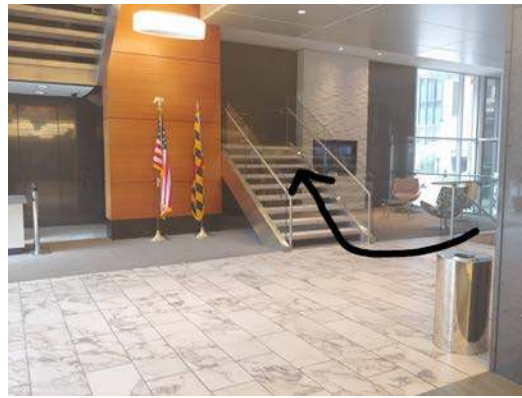


Walk out toward the garage entrance.

Once outside the lot and on the sidewalk, make a left and walk to the corner of Charles and Lombard.



Once you reach the corner, our entrance is to your left and up the stairs.

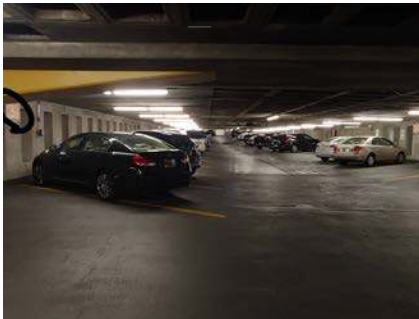


Go up the stairs to the 2nd floor or take the elevators to the 2nd floor.

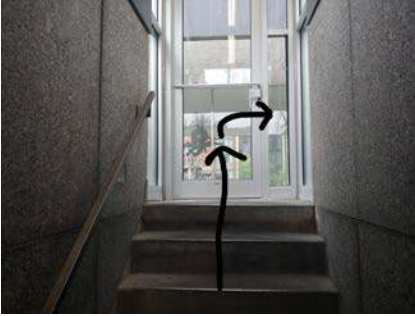
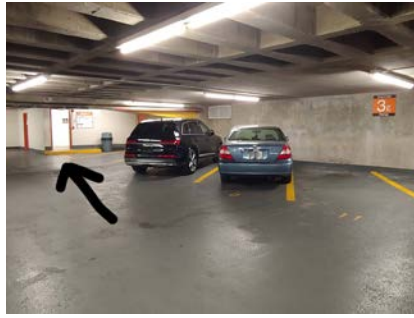
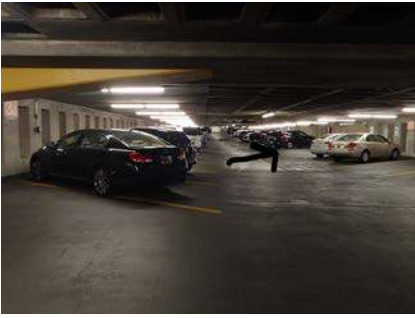


### **Parking in 3D:**

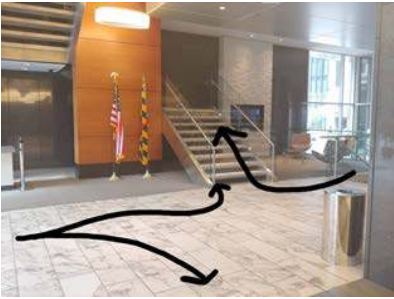
If there is no parking in 2C, continue down the ramp, turn left and you will come upon section 3D:



Once parked in 3D, there will be a stairwell nearby labeled “Charles Street” on an orange sign. This stairwell is in the nearby parking section, 3E. Take these stairs all the way to the top.



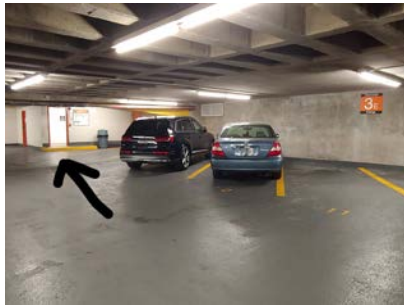
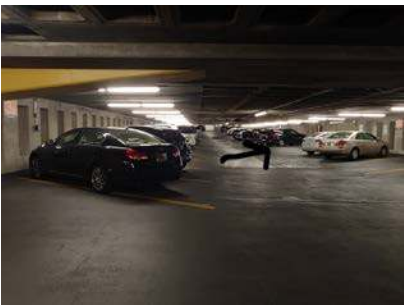
Once outside, make a right. Building 36 will be down the stairs and through the revolving doors ahead of you.



Go up the stairs to the 2nd floor or take the elevators.

### Parking in 3E

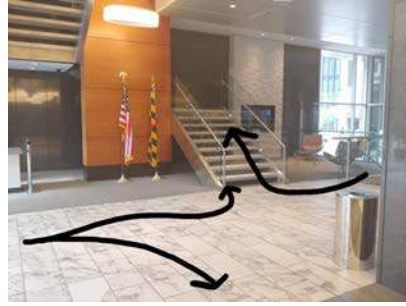
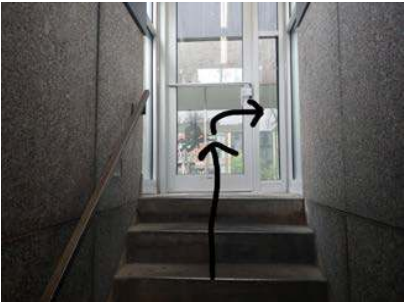
If there is no parking in 3D, you can make an immediate right to enter section 3E from 3D.



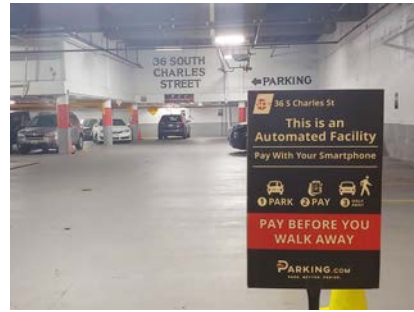
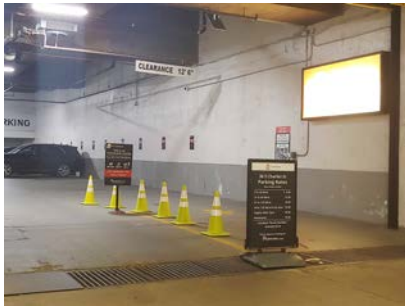
Take the stairwell in section 3E all the way to the top.

Take the stairs all the way to the top.

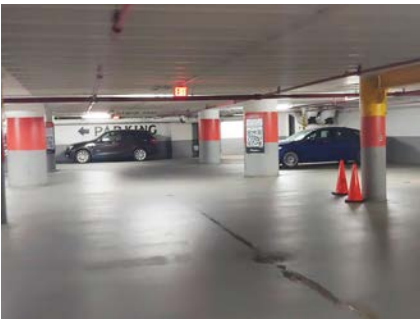
Once outside make a right and building 36 will be down the stairs and through the revolving doors ahead of you. Go up the stairs to the 2nd floor or take the elevators to our clinic.



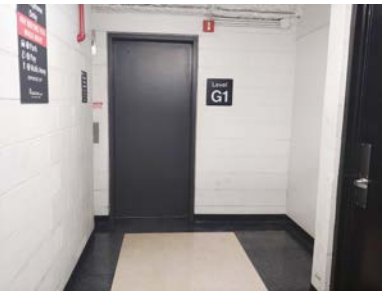
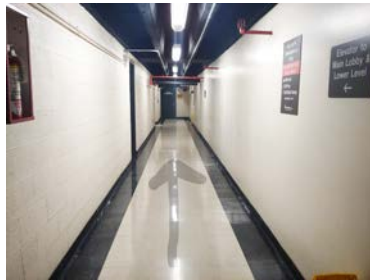
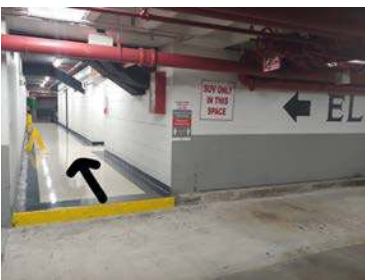
**36 South Charles Street Building Garage:**



Take the ramp at 36 S. Charles Street to enter the lower level garage. This is a “pay before you walk away” garage.



Follow the hallway near your parking space and take either the level G1 or level G2 elevator to the Main Lobby Level.



From the parking garage elevator, follow the hallway to the right until you see the clinic building elevators. Take the elevator to the 2nd floor or the stairs past the elevators up to the 2nd floor. Follow the sign for Grand Therapeutic Services.

If you have any questions, call us at 410-878-1014

We look forward to seeing you soon!